

Personalised Travel Payments (PTPs)

An Innovative Travel Pilot

Workshop jointly facilitated by:

- Debra Oldman, SEND Projects Manager, Education High Needs SEND Service, NCC
- Will Tait, Transport Officer, Education High Needs SEND Service, NCC
- Rachel Clarke, Family Voice Ambassador
- Jacky Batchelor, Transport Officer, Community and Environmental Services, NCC

What is the purpose?

- To raise awareness about the Personalised Travel Payments pilot scheme.
- To gain feedback from families on the scheme to inform the pilot.
- To take expressions of interest from families.

What is a Personalised Travel Payment?

The PTP is a sum of money provided by the local authority to families of children with SEND to organise their child's own home to school transport.

Details of the Pilot

- We are looking at a cross-section of different family scenarios and school journeys
- The pilot will run for approximately 12 months
- We are looking for 200 interested families to work with us to test the scheme

Who can apply?

- A PTP is for the families of **children and young people with or without an EHCP**.
- Children in any school setting can apply – special, mainstream, non-maintained, boarding, primary and secondary schools.
- In order to receive a PTP, you must first be **eligible for specialist transport** from Norfolk County Council.

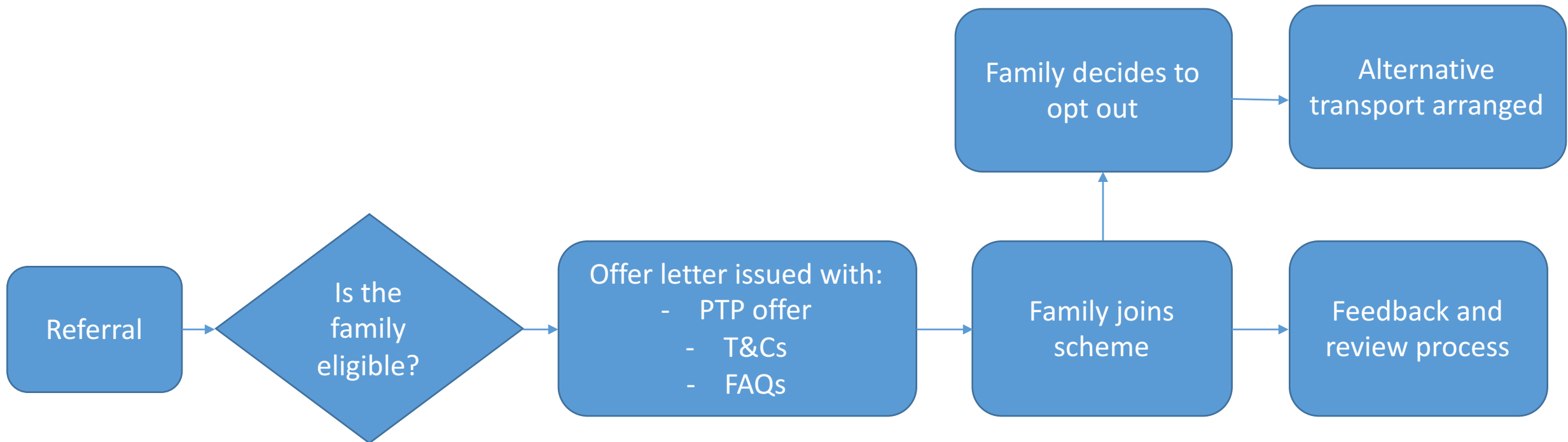
Eligibility

- We will only offer you a PTP **if your child is eligible to receive a taxi or minibus.**
- You must meet the qualifying criteria set out in the Home to School transport policy regarding distance.
- Post-16 – we would offer the PTP to post-16 students, but a parental contribution would be deducted from the total amount.

How is the PTP calculated?

- The payment is based on distance from home to school
- Distance is measured using the council's own measurement software
- The amount is calculated using HMRC mileage rates
- A PTP is supplemented by Additional Support Allowance for contingencies

How does it work?



What are the benefits?

- **Flexibility**
- **Reduced Travel Time**
- **Opportunities**
- **Peace of mind**
- **Choice**
- **School Community Involvement**

Things to Consider

- The PTP is completely **optional** - You can opt out at any time (please give us at least 10 working days' notice).
- When signing up to the PTP, **you will be responsible for organising your child's home to school transport.**
- Families will need to consider a "Plan B".
- You will be expected to provide feedback during the pilot.

How to Apply

- Expression of Interest forms handed out at the end of the workshop
- Box in the main hall to return these into
- More information on the Local Offer website

<https://www.norfolk.gov.uk/children-and-families/send-local-offer/about-the-local-offer/personalised-travel-payment-pilot>

- Email: cs.sencommissioning@norfolk.gov.uk

In breakout groups, please discuss.....

- What potential barriers do you see that would stop a family from participating in the scheme?
- How could these barriers be overcome?
- Is there anything else that must be considered during the pilot?

(20 mins)



Feedback from breakout groups



Thank you for your time and input

- “Expression of Interest” form is available for completing
- A box is located in the Main Hall for you to post these into

<https://www.norfolk.gov.uk/children-and-families/send-local-offer/about-the-local-offer/personalised-travel-payment-pilot>

Email: cs.sencommissioning@norfolk.gov.uk