

Speech and Language Therapy

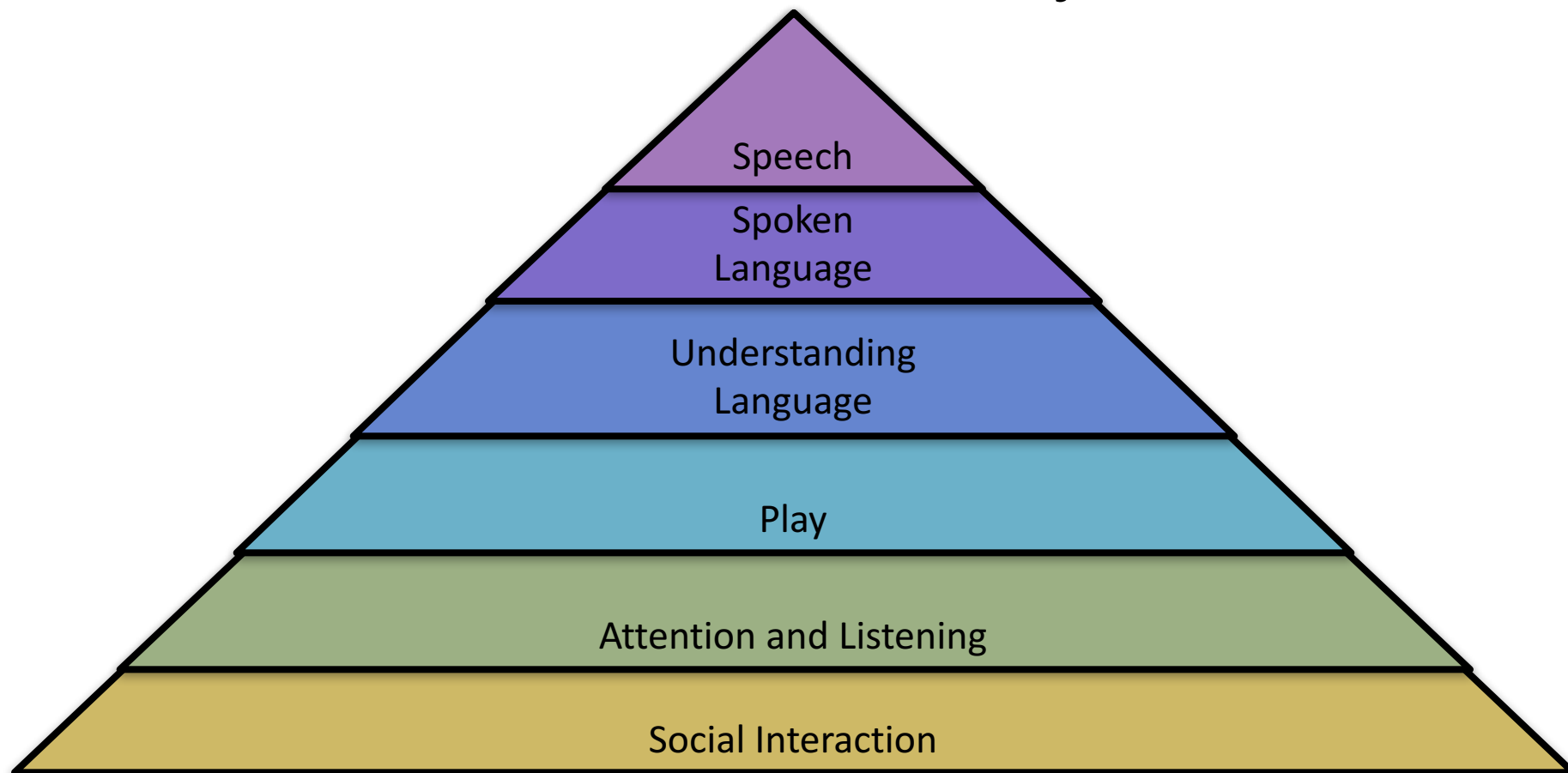


Contents

- Typical Communication Development
- Speech Language and Communication Needs
- What do we do
- What to expect from speech and language therapy



The Communication Pyramid



What are speech language and communication needs?

Have speech that is difficult to understand

Struggle to say words or sentences

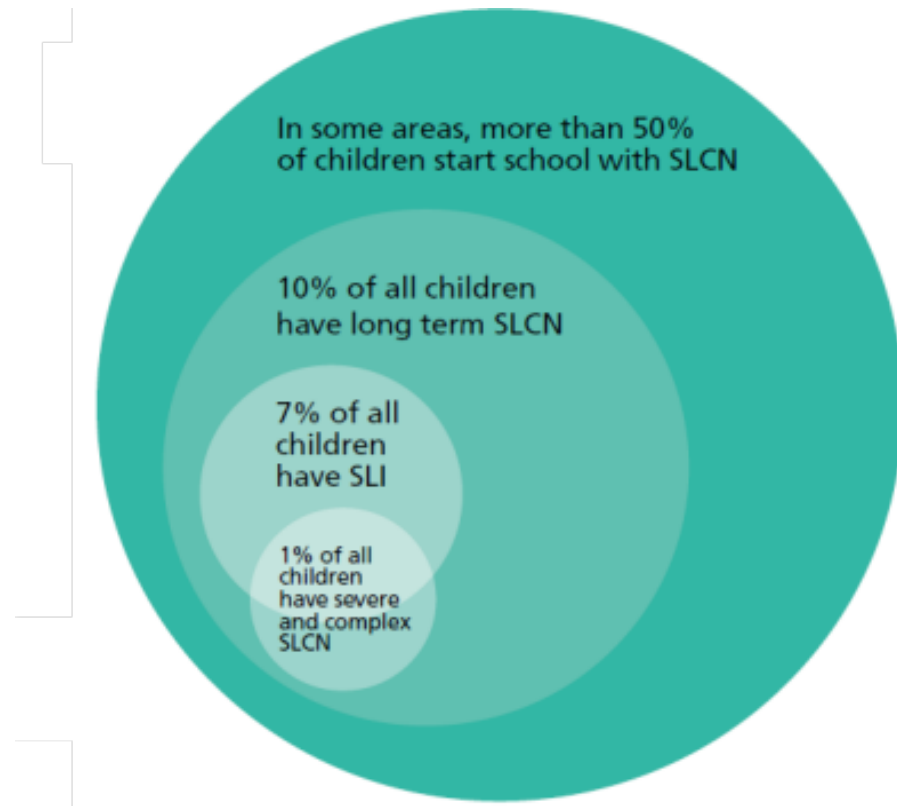
Find it hard to understand words

Difficulties knowing how to talk and listen to others in a conversation

Difficulties understanding instructions or sentences

Difficulties understanding the 'rules' of interaction

So how common are SLCN?



How are SLC needs addressed?

All SLCN benefit from positive communication environments

Some SLCN benefit Speech and Language Therapy Advice and Support

Speech and Language Therapy

Assessment:

Attention and listening skills

Understanding of language

Ability to put sentences together

Speech

Conversation and social skills

Intervention:

maximise each child's ability to communicate through
advice and intervention

Speech and Language Therapy Support

Indirect Speech and Language (SaLT) support;

Advising the parents, carers and professionals

- Strategies
- Activities
- Specific approaches
- Other services
- Training

Speech and Language Therapy Support

Direct Speech and Language (SaLT) support

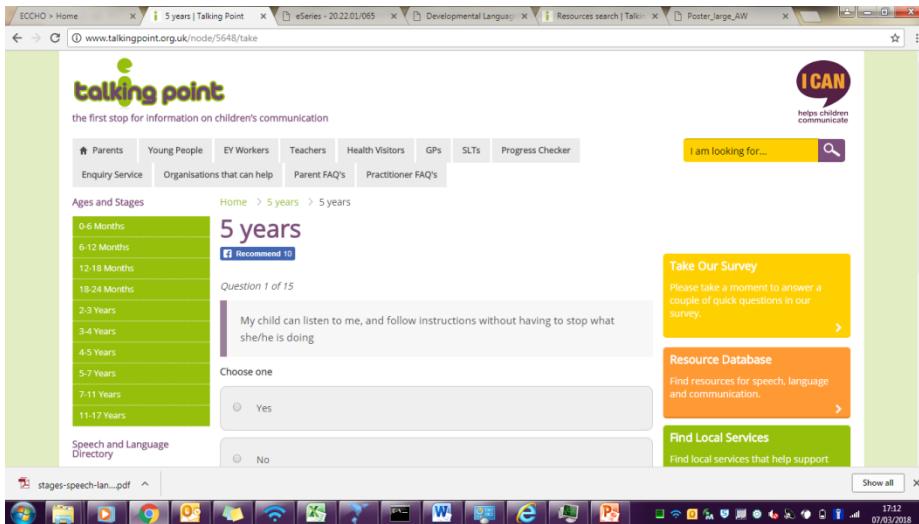
- Working face to face with child/young person often alongside parents/carers/professionals
- Carry out specific/specialist interventions
- Skills up those around the child/young person
- Training

What difficulties do we support?

- Language Difficulties
- Speech Difficulties
- Stammering
- Alternative and Augmentative Communication Needs
- Cleft Palate and Velopharyngeal Dysfunction
- Swallowing Difficulties (Dysphagia)
- Hearing Impairment
- Complex Needs
- Voice (via Ear, Nose and throat Consultant only)
- Social Communication Difficulties, including diagnostic assessments

What to do if you are worried

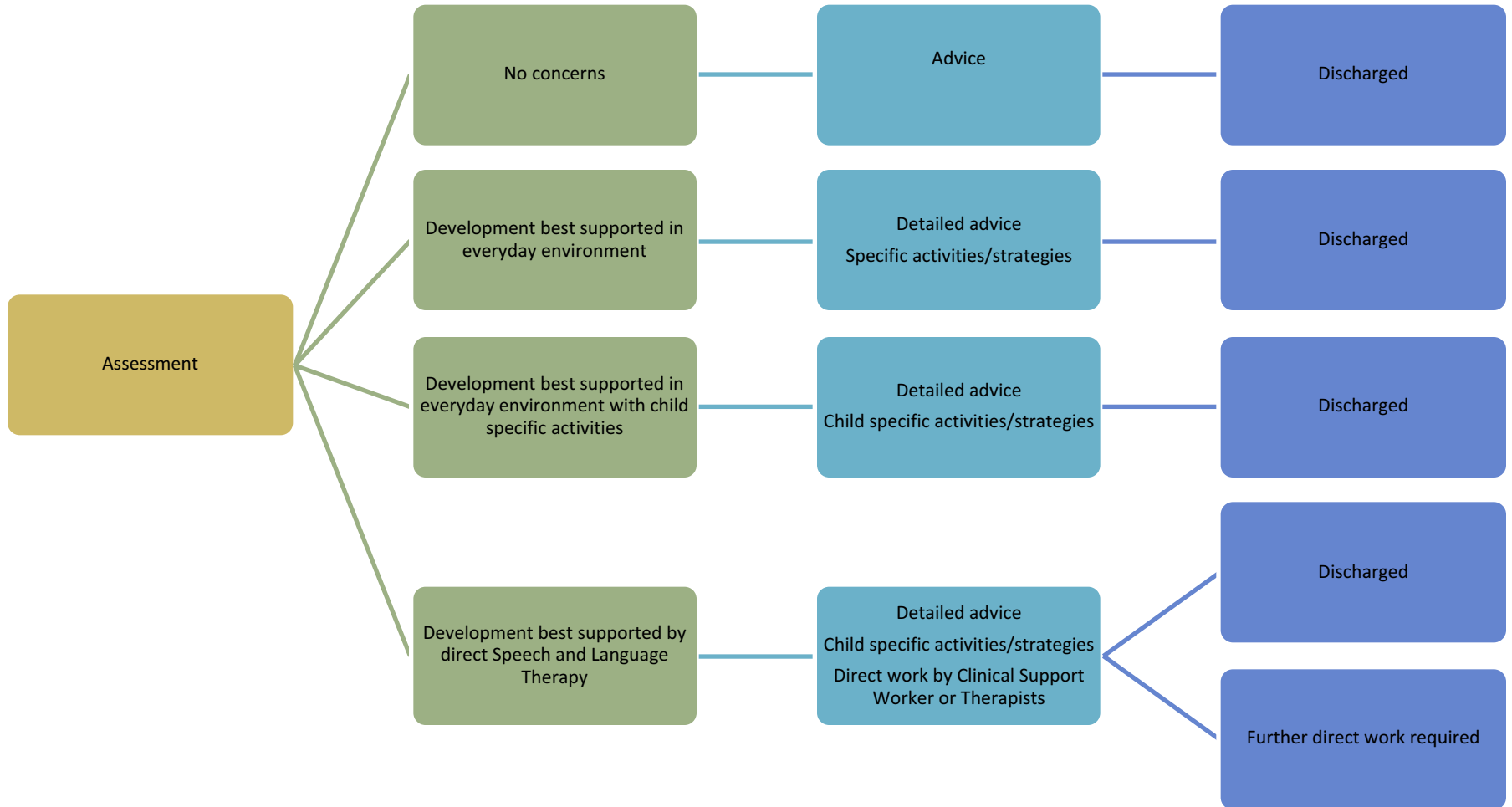
[Talking Point Progress Checker](#) which offers guidance on any support required



The screenshot shows the Talking Point Progress Checker website. The page is titled "5 years" and is part of a "Progress Checker" tool. It features a navigation menu with options like "Parents", "Young People", "EY Workers", "Teachers", "Health Visitors", "GPs", "SLTs", and "Progress Checker". A search bar is present with the text "I am looking for...". The main content area displays a question: "My child can listen to me, and follow instructions without having to stop what she/he is doing". Below the question, there are radio buttons for "Yes" and "No". To the right, there are three promotional boxes: "Take Our Survey", "Resource Database", and "Find Local Services". The website is branded with "Talking Point" and "I CAN helps children communicate".

Speak to your child's health visitor via the healthy child team on 0300 300 0123
Speak to their preschool, nursery, school or local Children's Centre
Make a referral to the East Coast Community Healthcare (ECCH) Children's Speech and Language Therapy (SaLT) service

What to expect



The discharge word!!



01493 809977

